

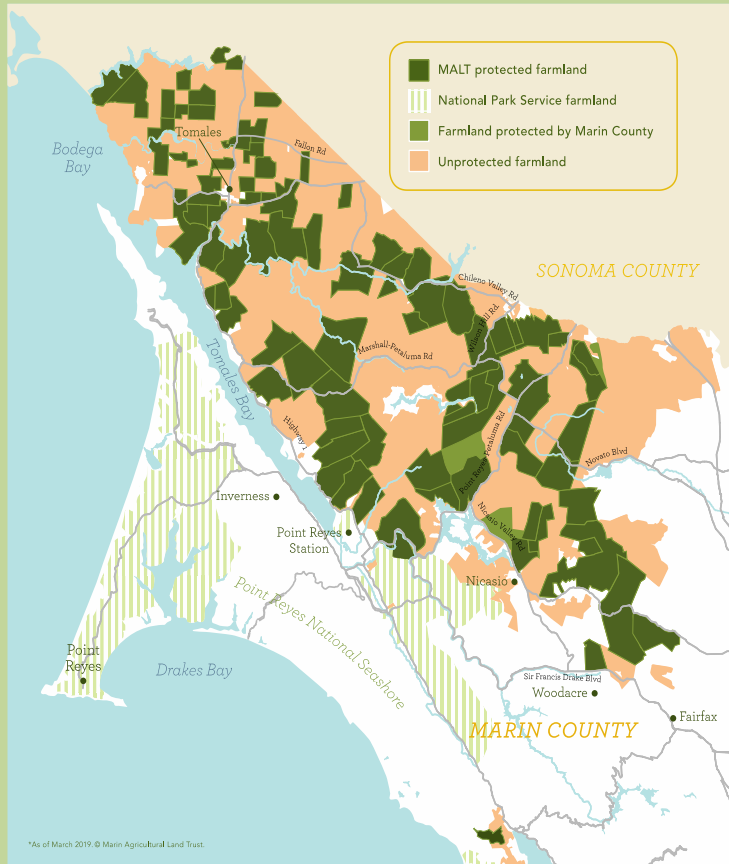


# Soil Health Stewards at MALT:

## Sustainable Management of Permanently Protected Land



# MALT: Protecting Agricultural Land for Agricultural Use



- MALT was established in 1980 as nation's first agricultural land trust
- 54,000 acres permanently protected
- Easements on almost half of the privately-owned agricultural land in Marin County.
- Easements with 86 farming and ranching families.

# MALT's agricultural conservation easements

- Mandatory agricultural use requirement
- Agricultural Management Plan
- Creek Conservation Area protections
- Stewardship Assistance Program



# Benefits of sustainably managed agricultural land

- Soil health
- Biodiversity
- Water quality
- Carbon sequestration



# Stewardship Assistance Program:

Funding sustainable management practices on protected properties.

- Direct grants to ranchers and farmers (up to \$15,000)
- Participation in multi-agency funded projects (up to \$50,000)
- Matching contribution to partner grant applications.



# Drought Resiliency and Water Security Program: Emergency Grants for Water Improvements

- \$500,000 total commitment
- Direct grants to farmers and ranchers (up to \$15,000)
- Available to all Marin farmers and ranchers.

